

Maxtek SH-101/102 IF-111/IF-276

Single Sensor Heads/Feedthroughs

UNIQUE DESIGN ENHANCES CRYSTAL PERFORMANCE

The SH-101/102 Sensor Heads are designed for simple installation and easy crystal replacement. The sensor head consists of two basic units: A water-cooled 304 stainless steel housing, which is permanently positioned in the vacuum system and a the unique Cool Drawer™ crystal holder, which snaps into the housing.

The Cool Drawer™ crystal is thermally shielded by the water cooled housing insuring excellent crystal performance in environments up to 300°C. The sensor head may be used with no water cooling to temperatures up to 160°C. The exposed crystal electrode is fully grounded to effectively eliminate problems due to RF interference.

The SH-101 is designed for installation through the top of the vacuum system and the water tubes are perpendicular to the crystal face. The SH-102 is designed for installation from the side or the bottom of the chamber and the cooling tubes and the crystal are parallel. Each sensor head is provided with (4) tapped (4-40) holes for convenient mounting, 0.31 cm (1/8") O.D. diameter x 76 cm (30") long water tubes and a coaxial connector.

The SH-101/102 can be installed in the system using either the IF-111 or the IF-276 feedthrough. The IF-111 is a 2.5 cm (1") bolt, o-ring sealed feedthrough with one electrical and two water tubes. The IF-276 is a 7 cm (2-3/4") Conflat® feedthrough with one electrical and two water tubes. Brazing or Swagelok® fittings are required to complete the installation.

FEATURES AT A GLANCE

- Simple installation
- Single crystal
- Compact
- Unique Cool Drawer™ crystal holder
- Easy crystal replacement



Cool Drawer™ crystal holder

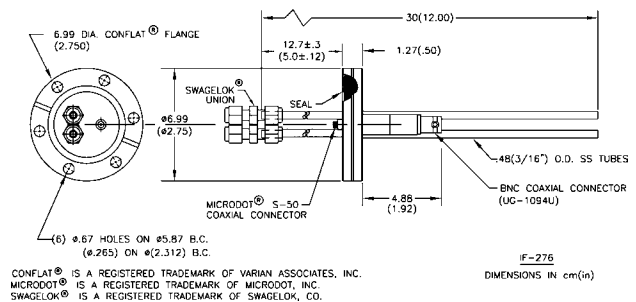
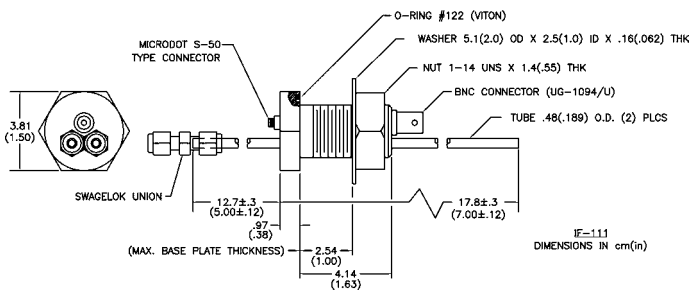
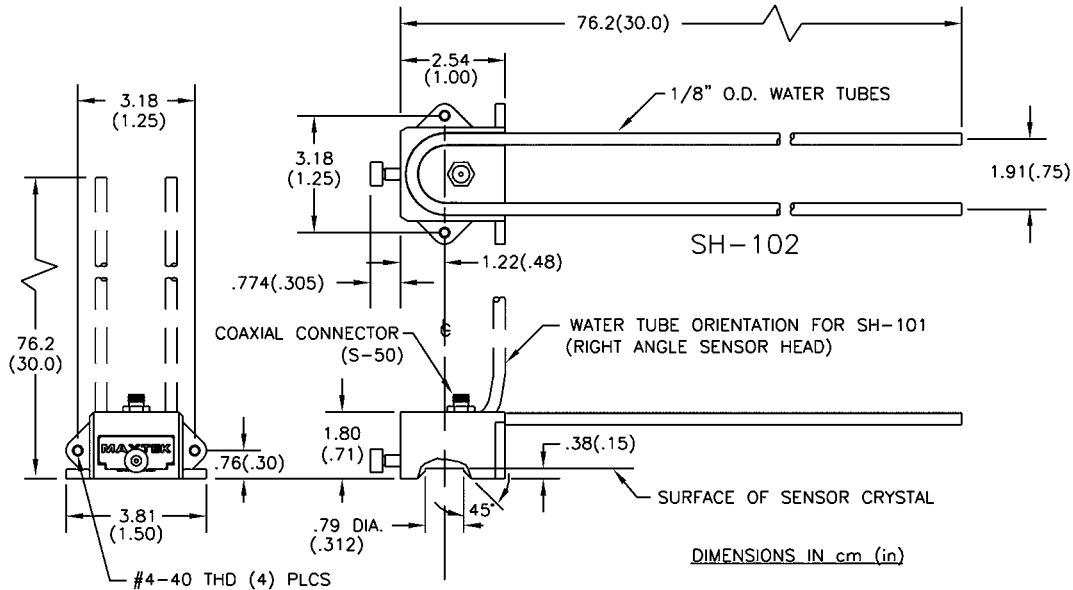
SPECIFICATIONS

Materials	304 CRES, Teflon®, ceramic, beryllium nickel
Finish	Stainless steel, gold plated Cool Drawer™
Cooling	Water 0.2 GPM using 1/8" O.D. tube
Temperature	Operational environment to 300°C with water cooling or 160°C without
Electrical Connection	30" miniature coax (S-50) cable standard (60" available)
Crystal	Industry standard 0.550" diameter

ORDERING INFORMATION

Each sensor head includes: (1) SH-101 or SH-102, (1) package of 10 each SC-101 crystals and (1) 30" Microdot® cable

Model #	Part #	Description
SH-101	123214	Single Right Angle Sensor Head, 76 cm (30") tube length. Crystal face is perpendicular to the water tubes for top mounting.
SH-102	123200-5	Single Sensor Head, 76 cm (30") tube length. Crystal face is parallel to the water tubes for side or base plate mounting.
Feedthroughs:		
IF-111	130200-2	2.54 cm (1") bolt feedthrough, (1) electrical connector and (2) 0.48 cm (3/16") diameter water tubes
IF-276	130204-2	7 cm (2-3/4") Conflat® feedthrough, (1) electrical connector and (2) 0.48 cm (3/16") diameter water tubes



CONFLAT® IS A REGISTERED TRADEMARK OF VARIAN ASSOCIATES, INC.
MICRODOT® IS A REGISTERED TRADEMARK OF MICRODOT, INC.
SWAGelok® IS A REGISTERED TRADEMARK OF SWAGelok, CO.



www.inficon.com reachus@inficon.com

Cool Drawer is a trademark of INFICON. All other trademarks are the property of their respective owners. Due to our continuing program of product improvements, specifications are subject to change without notice.

cmbd79a1 ©2007 INFICON