

Maxtek RSH-600

Rotary Sensor Head



EXCELLENT CRYSTAL PERFORMANCE IN DEMANDING APPLICATIONS

RSH-600 Series Rotary Sensor Heads are designed for demanding processes, employing very thick films and several different materials.

The RSH-600 Series hold six crystals in a thermally shielded, water cooled housing, ensuring excellent crystal performance in temperature environments up to 300°C. Crystals are housed in an easy to remove Teflon® and stainless steel crystal holder. Crystal position is incremented by applying a 1 second pulse to a 110/115 VAC or 24 VDC pneumatic valve. A 7-pin connector provides individual switch closures to ground to indicate the current crystal position.

The RSH-600 Series can be configured with a flat head for top mount installation through an o-ring sealed feedthrough (not included). The 45° angle head can be configured for installation through the side of the chamber.

Standard head covers are made of stainless steel. Copper head covers are available for applications where temperature is a concern.

All models of the RSH-600 Series are adjustable up to their specified lengths:

- RSH-600 - in-vacuum length = 7.9"
- RSH-601 - in-vacuum length = 13.8"
- RSH-602 is available in 3 lengths: 17.7", 21.3" and 25.6".
- Longer lengths are also available.

FEATURES AT A GLANCE

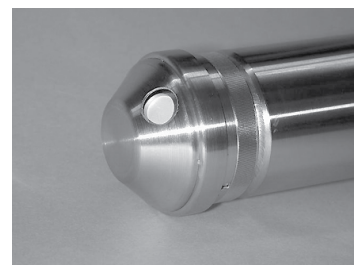
- Six crystals
- Position feedback
- Adjustable length
- Rugged design



Crystal retainer assembly and standard stainless steel cover



Copper Head Cover



45° Angle Head

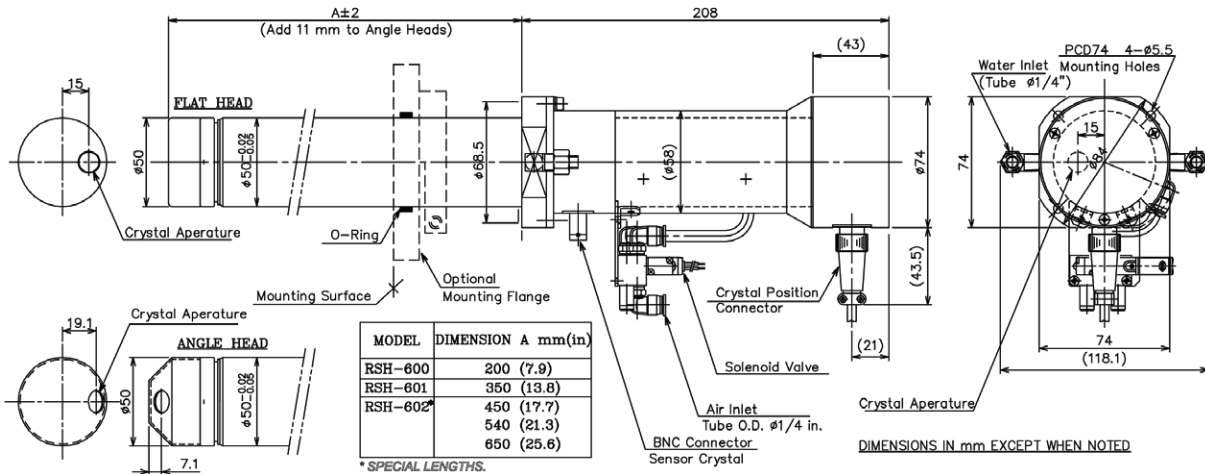
SPECIFICATIONS

Materials	304 CRES, Teflon®, Beryllium Nickel
Cooling	Water, 5 liters/minute at 2 kg/cm, (28 PSI), water temperature <30°C
Temperature	Operational environment to 300°C with water cooling or 200°C without
Electrical Connection	(1) standard female BNC on atmosphere side
Crystal	(6) Industry standard 0.550" diameter
Air Supply	4 kg/cm (56 PSI), regulated
Pneumatic Valve	AC 115V/50 milliamps or 24 VDC/20 milliamps
Installation Aperture	50.8 mm + 0.2, -0.0 mm diameter
Flange	Not included (can be ordered to customer specifications)
Air/Water Connection	(3) 1/4" quick connects
Weight/Length	RSH-600; 3.8 kg (8.5 lbs)/42 cm (16.7") RSH-601; 4.5 kg (9.0 lbs)/58 cm (22.6")
Sensor Head	Flat or Angle (45°) are available

ORDERING INFORMATION

1 5 3 2 0 x - x x

Model	Head Type	Internal Length	Voltage
RSH	6 = Stainless Steel Flat Head	0 = 200 mm (7.9")	1 = 115 Volts
	7 = Stainless Steel Angle Head	1 = 350 mm (13.8")	2 = 24 Volts
	8 = Copper Flat Head	2 = 450 mm (17.7")	
	9 = Copper Angle Head	3 = 540 mm (21.3")	
		4 = 650 mm (25.6")	



www.inficon.com reachus@inficon.com

Cool Drawer is a trademark of INFICON. All other trademarks are the property of their respective owners. Due to our continuing program of product improvements, specifications are subject to change without notice.