

## Q-pod Quick Start

***Attention:*** If this is the initial Q-pod installation on this computer, you must install the Q-pod Software before connecting a Q-pod to the USB port.

### Install Software

**1. Place the Sigma Instruments Program Disk in the computer's CD-ROM.**

After a few seconds, a menu of instruments will display. If it does not:

1. Double-click the My Computer icon on your desktop.
2. Right-click the CD-ROM icon, then click Open.
3. Double-click the Σ UtilityDisk file.

**2. On the Sigma Products menu click Q-pod, then click Install Software.**

The latest software is also available at [www.sig-inst.com](http://www.sig-inst.com), Downloads page.

**3. Select the default installation choices.**

**4. When software installation is complete, exit the Sigma Products program.**

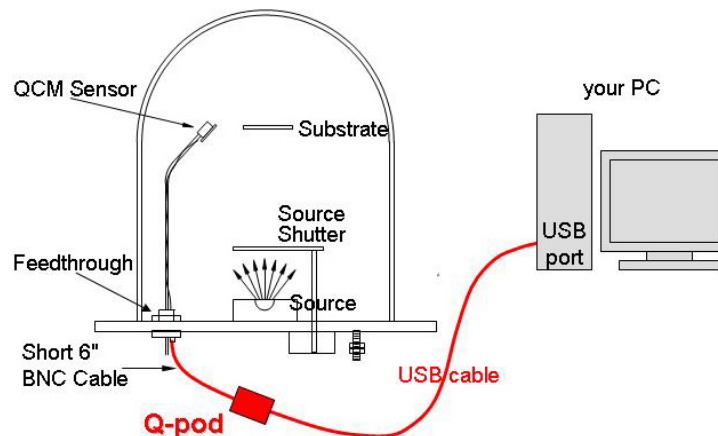
### Connect Q-pod

**1. Connect the USB cable to a computer USB port, then to the Q-pod.**

If you are prompted to install the Q-pod drivers, select Install the Software Automatically.

If you are prompted concerning Windows Logo Testing, select Continue Anyway.

Thin Film Deposition System



**2. Use the 6" BNC cable provided to connect the Q-pod to the QCM sensor.**

**3. The status light on the Q-pod glows solid when a quartz crystal is detected.**

### Start Q-pod Program

**1. Click the Q-pod desktop icon, or click Start, Programs, Sigma Instruments, Q-pod.**

If you are prompted to assign Q-pod(s) to a channel, click Yes.

## Main Screen



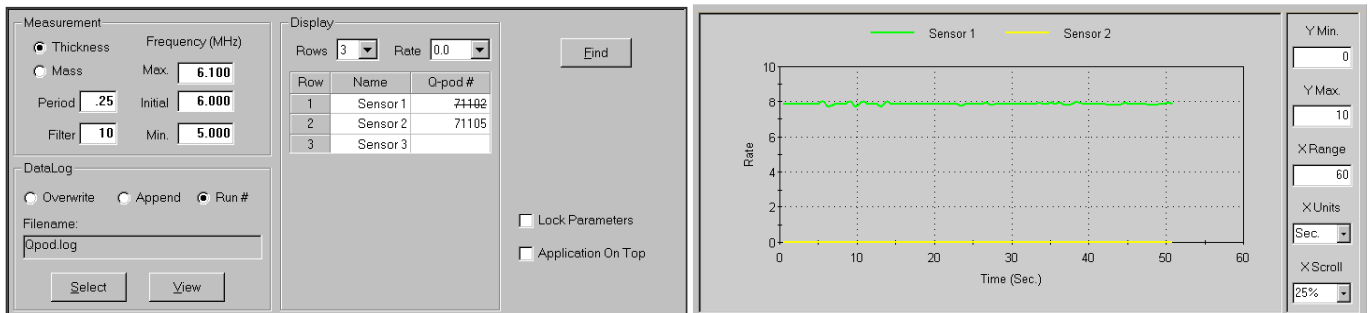
**Reading Grid:** The left grid displays the measured values of each connected Q-pod. Click Start to display Rate and Thickness readings. Frequency and Life readings are always displayed. Click a channel's Zero button to zero the channel thickness reading. Shift-Click any channel Zero button to zero all thicknesses.

**Materials Grid:** In the right grid, edit the Density, Z-Factor and Tooling values for the materials being deposited. Move your mouse over each setting to see a brief description. Click Help to get more detailed information on materials and operation.

Select Setup or Graph on the Main Screen menu to change the main screen display mode.

### Setup Display

### Graph Display



#### **Setup Display:**

**Measurement:** Sets the basic measurement parameters for all Q-pods. The values shown above are correct for most applications.

**DataLog:** Sets the file name and operation of disk data logging. Data is saved in comma delimited format for easy import into a spreadsheet.

**Display:** Sets the number of channels (rows) displayed on the main screen, and the resolution of the rate display. Also sets the name and serial number of the Q-pod assigned to each measurement channel. A strike-through serial number indicates the Q-pod is not connected.

**Find:** Click to search for attached Q-pods.

#### **Graph Display:**

Graphs the deposition rate of active measurement channels when Start is clicked. Settings to the right of the graph control basic graph functions. See Help for advanced graph setup.