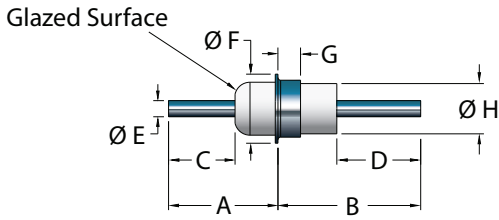
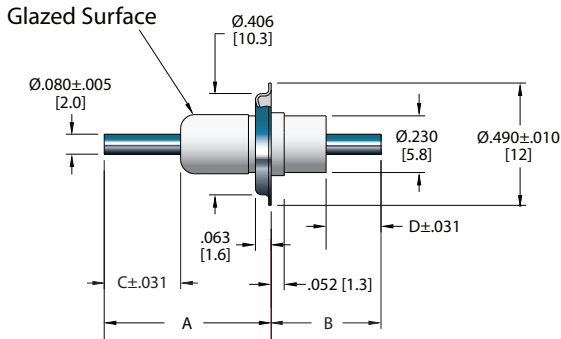


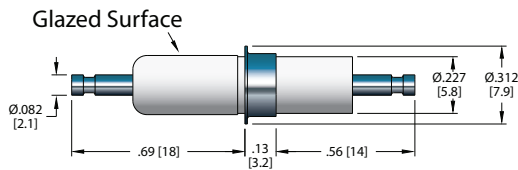
Pin or Tube Conductor



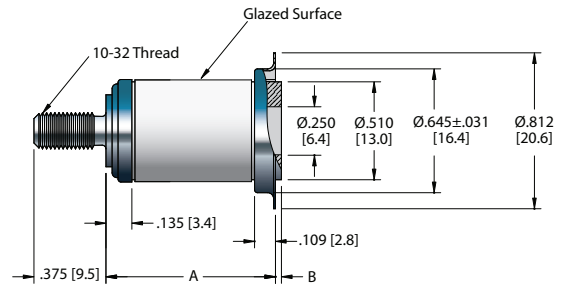
Pin Conductor



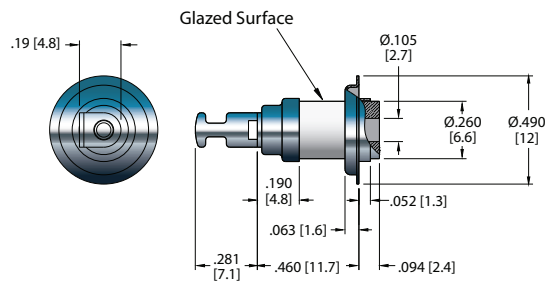
Wire-Solder Conductor



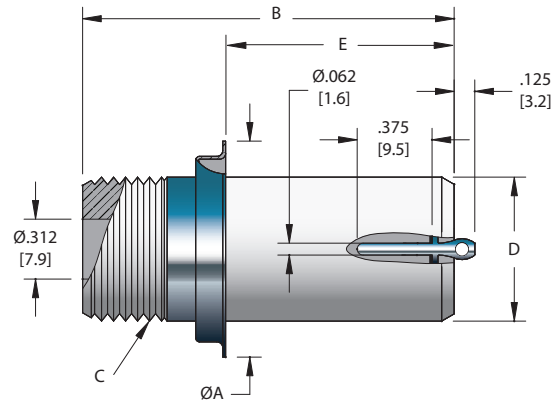
Threaded Termination



Lug Termination



Threaded Ceramic



Specifications – Pin or Tube Conductor
Materials

Flange: 42% Nickel iron
Pin: See table
Insulation: 90% Min. alumina ceramic
Magnetic Materials: Yes

Voltage Rating See table

Current Rating

0.060 Kovar Conductor - 3.5 Amps
0.080 Kovar Conductor - 5 Amps

Temperature Range -65°C to 200°C

Specifications
Materials

Flange: 42% Nickel iron
Lug: Low Carbon Steel
Stud: Monel
Insulation: 90% Min. alumina ceramic
Magnetic Materials: Yes

Voltage Rating See table

Current Rating

Threaded Ceramic: 0.062 CRS Conductor – 10 Amps

Temperature Range -269°C to 450°C

Pin or Tube Conductor



INSTALLATION	CONDUCTOR		CORONA START* KV-RMS AVE	FLASHOVER* KV-RMS AVE	DIMENSIONS (inches)								PART NUMBER	PRICE
	TYPE	MATERIAL			A	B	C	D	E	F	G	H		
Solder	Per Drawing	Kovar	2.0	4.0	.406	.531	.250	.312	.060	.250	.084	.188	0205-01-H	
Solder	.065" ID Tube	42% NiFe	2.0	5.0	.609	.500	.312	.219	.080	.312	.115	.230	0206-01-H	
Solder	.065" ID Tube	42% NiFe	2.5	6.0	.698	.672	.250	.250	.080	.312	.115	.230	0209-01-H	
Solder	Per Drawing	Kovar	2.0	5.0	.609	.500	.312	.219	.080	.312	.115	.230	0712-01-H**	

Pin Conductor



INSTALLATION	CONDUCTOR MATERIAL	CORONA START* KV-RMS AVE	FLASHOVER* KV-RMS AVE	DIMENSIONS (inches)				PART NUMBER	PRICE
				A	B	C	D		
Solder	Kovar	2.0	5.0	.671	.437	.312	.219	0208-01-H**	
Solder	Kovar	2.5	6.0	.760	.615	.250	.250	0211-01-H**	

Wire-Solder Design



INSTALLATION	CONDUCTOR MATERIAL	CORONA START* KV-RMS AVE	FLASHOVER* KV-RMS AVE	PART NUMBER	PRICE
Solder	Kovar	2.5	6.0	0730-01-H**	

Threaded Termination



INSTALLATION	CORONA START* KV-RMS AVE	FLASHOVER* KV-RMS AVE	DIMENSIONS (inches)		PART NUMBER	PRICE
			A	B		
Braze	3.0	6.0	.458	.031	0666-05-B	
Solder	3.0	6.0	.458	.031	0666-05-H	
Braze	5.5	11.0	.758	.031	0666-07-B	
Solder	5.5	11.0	.758	.031	0666-07-H	
Braze	8.0	16.0	1.150	.203	0666-10-B	
Solder	8.0	16.0	1.150	.203	0666-10-H	
Braze	8.0	16.0	1.188	1.125	0666-19-B	
Solder	8.0	16.0	1.188	1.125	0666-19-H	
Braze	8.0	17.5	1.356	.031	0666-11-B	
Solder	8.0	17.5	1.356	.031	0666-11-H	
Braze	9.0	19.0	1.957	.250	0666-03-B	
Solder	9.0	19.0	1.957	.250	0666-03-H	

Lug Termination



INSTALLATION	CORONA START* KV-RMS AVE	FLASHOVER* KV-RMS AVE	PART NUMBER	PRICE
Braze	2.0	5.0	0920-01-B	
Solder	2.0	5.0	0920-01-H	

Threaded Ceramic



INSTALLATION	FLASHOVER* KV-RMS AVE	A	B	DIMENSIONS (inches)			PART NUMBER	PRICE
				C	D	E		
Braze	12	.812	1.00	1/2-20 THD	.510	.437	0945-01-B	
Solder	12	.812	1.00	1/2-20 THD	.510	.437	0945-01-H	
Braze	20	1.120	1.94	3/4-16 THD	.75	1.190	0353-01-B	
Solder	20	1.120	1.94	3/4-16 THD	.75	1.190	0353-01-H	

*All units were tested with glazed portions in air, unglazed portions entirely immersed in transformer oil. Flashover values are corrected for relative air density (R.A.D.) only. Tests are conducted at approximately 40% relative humidity. **This part is not RoHS compliant.

Parts ending in -H are furnished with hot dip solder finish for installation using soft solder.

