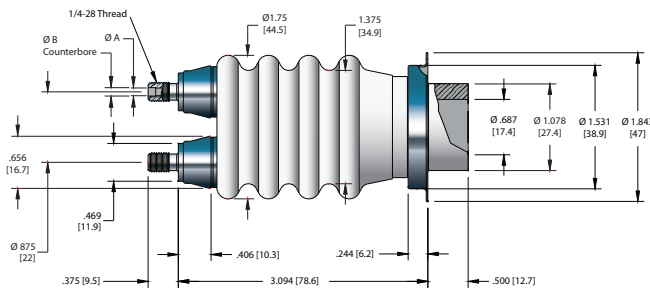
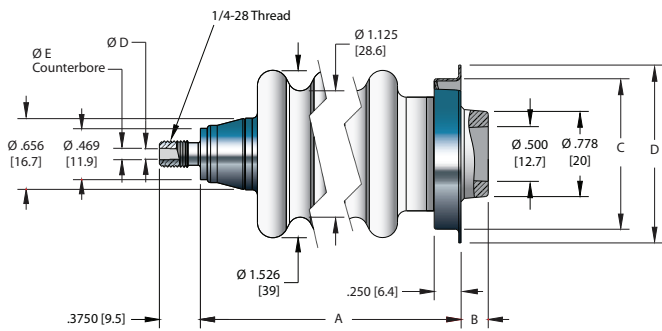
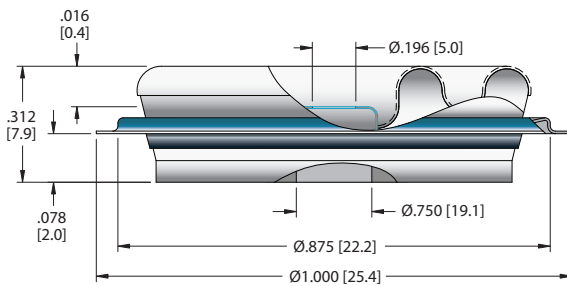


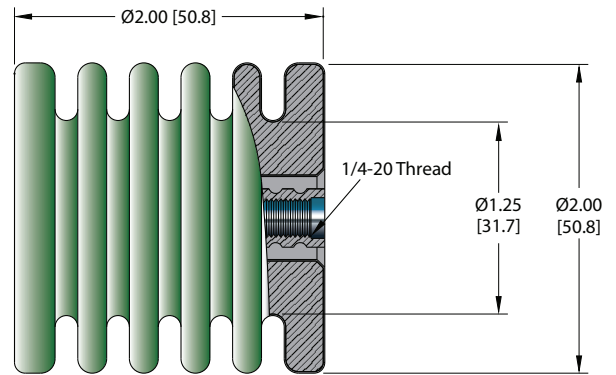
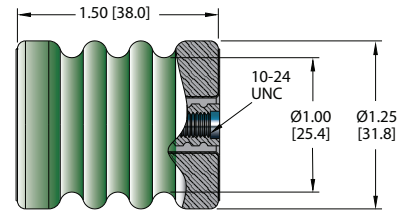
## Fluted Insulators



## Low Profile Insulator



## Standoffs



## Specifications – Fluted Insulators

### Materials

Flange: 42% Nickel iron  
 Stud: Monel  
 Insulation: 90% Min. alumina ceramic  
 Magnetic Materials: Yes

Voltage Rating See table

### Temperature Range

Brazeable Parts (-B): -269°C to 450°C  
 Solderable Parts (-H): -65°C to 200°C

## Specifications – Standoffs

### Materials

Insulation: Steatite (Teflon Coated)  
 Threaded Insert: Brass

Voltage Rating See table

Temperature Range -65 C to 200 C



INSTALLATION	CONDUCTOR TYPE	FLUTES NUMBER	CORONA START KV-RMS AVE	FLASHOVER KV-RMS AVE	DIMENSIONS (inches)					PART NUMBER	PRICE
					A	B	C	D	E		
Braze	None	2	8.0	16.0	1.500	1.125	1.375	0.094	0.104	0680-01-B	
Solder	None	2	8.0	16.0	1.500	1.125	1.375	0.094	0.104	0680-01-H	
Braze	None	3	12.0	24.0	2.375	1.375	1.625	0.094	0.104	0770-01-B	
Solder	None	3	12.0	24.0	2.375	1.375	1.625	0.094	0.104	0770-01-H	
Braze	None	4	14.0	30.0	2.875	1.375	1.625	0.094	0.104	0780-01-B	
Solder	None	4	14.0	30.0	2.875	1.375	1.625	0.094	0.104	0780-01-H	
Braze	None	5	18.0	36.0	3.375	1.375	1.625	0.094	0.104	0690-03-B	
Solder	None	5	18.0	36.0	3.375	1.375	1.625	0.094	0.104	0690-03-H	



INSTALLATION	CONDUCTOR TYPE	CORONA START KV-RMS AVE	FLASHOVER KV-RMS AVE	DIMENSIONS (inches)		PART NUMBER	PRICE
				A	B		
Braze	None	14.0	30.0	0.094	0.104	0635-01-B	
Solder	None	14.0	30.0	0.094	0.104	0635-01-H	



INSTALLATION	CORONA START KV-RMS AVE	FLASHOVER KV-RMS AVE	PART NUMBER	PRICE
Braze	4.0	8.0	0215-01-B	
Solder	4.0	8.0	0215-01-H	



FLUTES NUMBER	CORONA START KV-RMS AVE	FLASHOVER KV-RMS AVE	PART NUMBER	PRICE
2	15	20	7140-01-X	
4	22	30	8138-01-A	

\*All units were tested with glazed portions in air, unglazed portions entirely immersed in transformer oil. Flashover values are corrected for relative air density (R.A.D.) only. Tests are conducted at approximately 40% relative humidity.

Parts ending in -H are furnished with hot dip solder finish for installation using soft solder.

